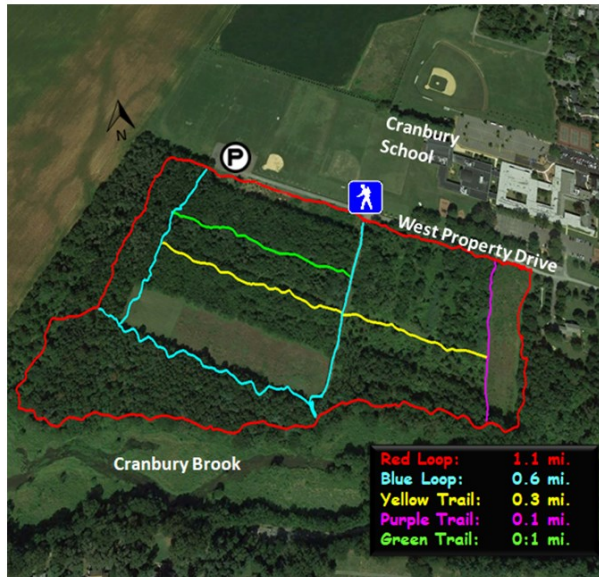


Cranbury Brook Preserve



The Cranbury Brook Preserve is located west of North Main Street and is accessed via West Property Drive. The preserve is heavily wooded and has been retained in its naturally vegetated state. A number of unpaved walking trails, initially created by the Boy Scouts, are available to the public for walking, jogging, cross-country skiing, fishing, bird watching and the general enjoyment of nature. Benches are available at various locations along the trails. The trails are closed to motorized vehicles. Parking is available at the end of West Property Drive.

A geocache is located at these coordinates:
40 18.625 N 74 31.554 W

Heritage Park

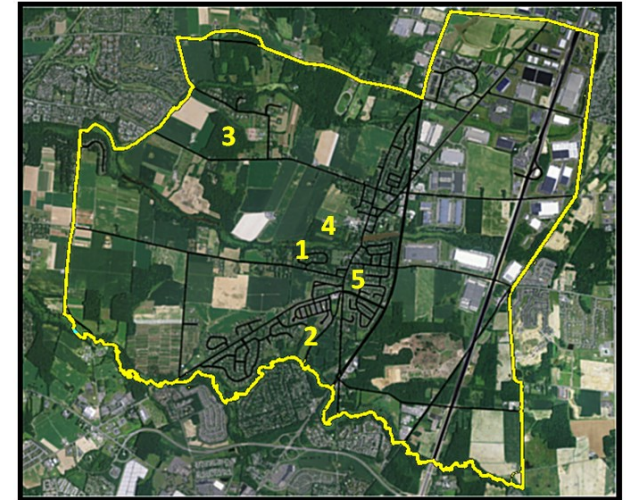


Heritage Park provides an “alternative recreation” space for unorganized, informal recreation (walking, jogging, biking, inline skating, Frisbee, kite flying, reading, dog walking, etc.). It is not intended for organized team or field sports (football, baseball, soccer, etc.). It features a water fountain, a large open meadow, a playground for small children, and a paved pathway about 1 mile long. Benches are located throughout the park along the walkways.

A geocache is located at these coordinates:
40 18.352 N 74 30.957 W



Cranbury Hiking Trails



The map above provides the approximate locations for Cranbury’s walking trails:

1. Unami Woods
2. Pin Oaks Loop Trail
3. Reinhardt Forest Preserve
4. Cranbury Brook Preserve
5. Heritage Park

These trails are maintained by the Cranbury Environmental Commission, Parks Commission, and Department of Public Works. For trails other than Heritage Park (which is paved), hiking boots, hat, long pants and bug spray are recommended to protect against sun, water, mud, insects and poison ivy. Each trail contains a geocache for you to discover. Please bring a bag to remove any trash you encounter during your walk.

Unami Woods / Brook Trail



Unami Woods is a three-acre, wooded section of the Cranbury Brook Preserve. It was named after the Unami, a Native American tribe that lived and hunted in the Cranbury area over 300 years ago. Two entrances to a half-mile loop trail are located along Wynnewood Drive, off of Cranbury Neck Road to the west of South Main Street. On street parking is available. The Unami Woods trails connect to the Brook Trail which runs along the Cranbury Brook and exits onto the Pump House road which runs behind the fire house on South Main Street.

A geocache is located at these coordinates:
40 18.521 N 74 31.610 W

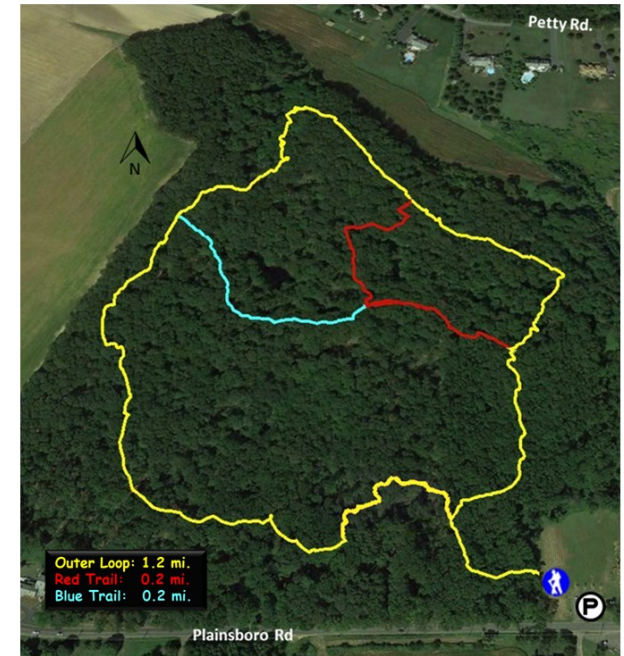
Pin Oaks Loop Trail



The Pin Oaks Loop Trail traverses the Hagerty Property located on the west side of Old Cranbury Road about half a mile south of Old Trenton Road. It links to another short trail that connects Pin Oaks Drive to Farmstead Way, providing hikers with multiple access points to the trails. Trail highlights: frogs, beavers, turtles, woodpeckers, red-winged blackbirds, and a host of wildflowers in the meadow. Parking is available at the end of Farmstead Way and at the trailhead on Old Cranbury Road. Deer hunting (bows only) is permitted in this area from September through February.

A geocache is located at these coordinates:
40 17.765 N 74 31.600 W

Reinhardt Forest Preserve



The Reinhardt Forest Preserve is located on Plainsboro Road, 1.5 miles from the intersection of Main Street and Plainsboro Road, heading west. It contains a series of moderate-to-easy trails through flat terrain. Its extensive wetlands, natural vegetation, vernal pools and variety of wildlife make it excellent for bird watching and the general enjoyment of nature. Onsite parking is available. Note that seasonal rains may flood certain sections of these trails. Deer hunting (bows only) is permitted in this area from September through February.

A geocache is located at these coordinates:
40 19.424 N 74 32.502 W